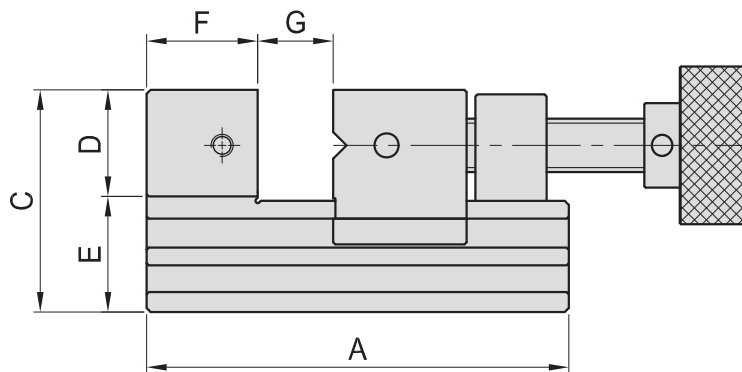
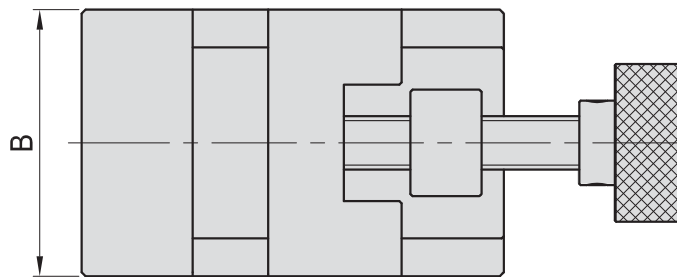
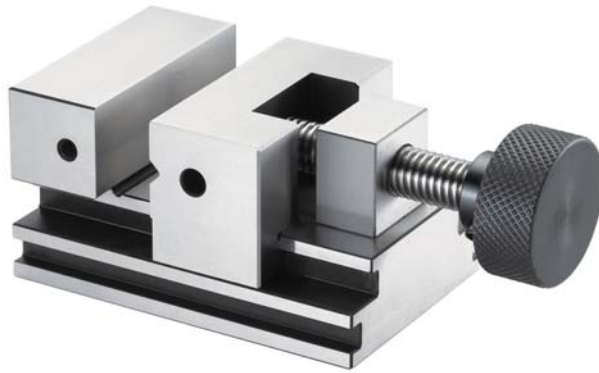


- Super precision: // $\pm 0.003 / 100\text{mm}$
 $\pm 0.005 / 100\text{mm}$
- Heat treated: HRC 58°~60°
- Material: SKS3



BP

BPA

BC

CP

SU

PT

SVF

ALV

OK-
VISE

OTHER

Column
for
Technical
Data

MODEL NO.	A	B	C	D	E	F	G	Kg
GVS-AS60	95	60	50	25	25	26.0	0~30	1.7