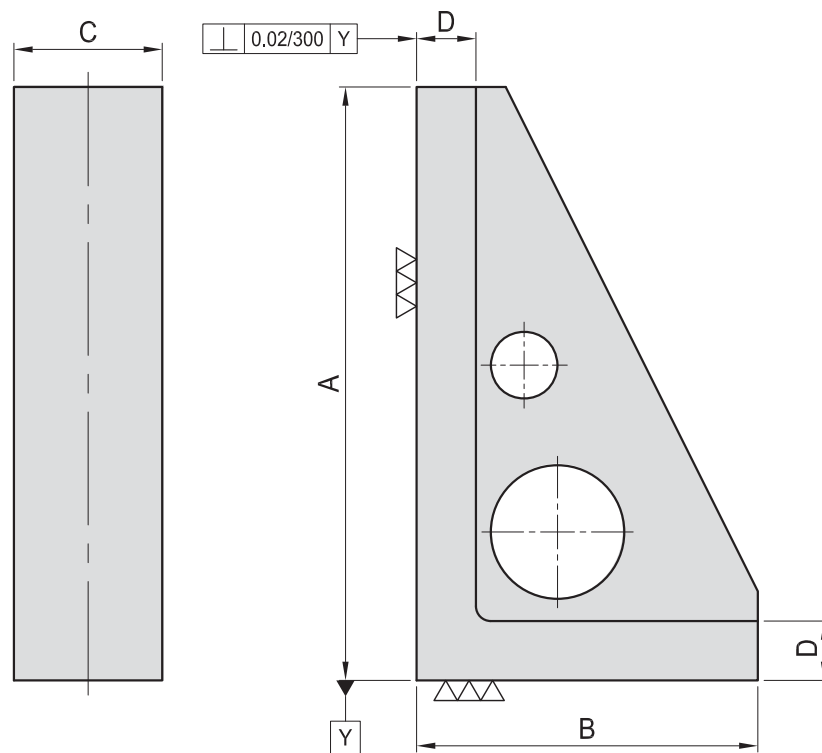
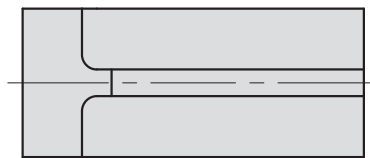




BP23

MC NARROW ANGLE PLATE

- Material: Cast Iron FC300(JIS) / GG30(DIN)
- Heat treated (Normalized)
- Application: HMC / VMC.
- Features: Ready to accept a hole pattern for your special jig.



MODEL NO.	A	B	C	D	kg
BP23-180100-0300	300	180	100	40	14
BP23-230100-0400	400	230	100	40	20
BP23-280100-0500	500	280	100	40	25

*Special Design Welcome !