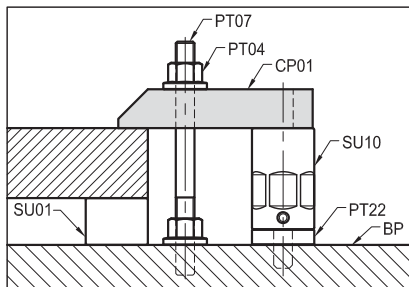
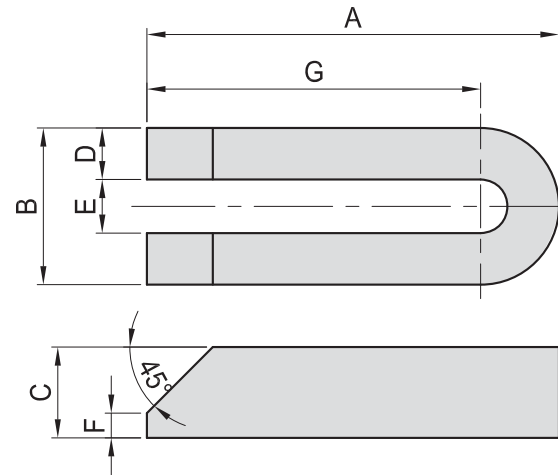


CP01

U-CLAMP



- Material : S45C(JIS) / CK45(DIN)
- Heat treated : HRC 32°~38°.
- Surface finish : Black Oxide.
- Features : Open end permits quick & easy installation.



MODEL NO.	A	B	C	D	E	F	G	kg
CP01-12100	100	38	22	12.5	13	6	81	0.41
CP01-12125	125		25				106	0.58
CP01-16150	150	50	32	16.5	17	8	125	1.10
CP01-16200	200						175	1.40
CP01-16300	300						275	1.55
CP01-20200	200	60	35	19.5	21	10	170	2.10
CP01-20300	300						270	2.70
CP01-24250	250	76	48	25.0	26	18	212	3.55