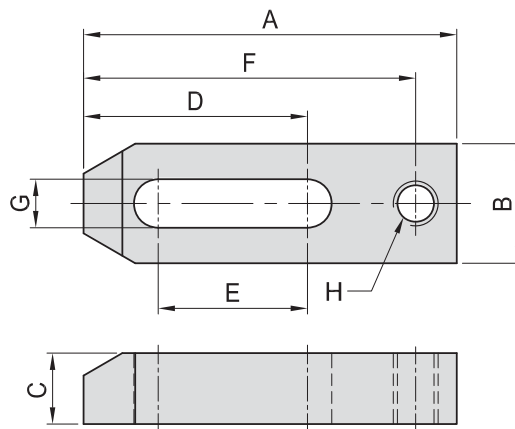
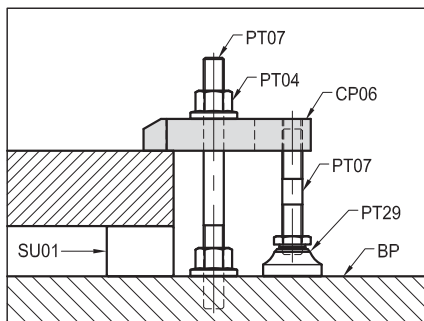


# CP06

## TAPPED CLAMP STRAP



- Material : S45C(JIS) / Ck45(DIN)
- Heat treated : HRC 32°~38°
- Surface finish : Black Oxide.
- Application : Use with various knobs, jack screws, clamps & pads; such as PT29.



MODEL NO.	A	B	C	D	E	F	G	H	kg
CP06-12065	65	32	19	32	14	52	13	M12	0.22
CP06-12080	80			48	25	69			0.27
CP06-12100	100			60	40	89			0.33
CP06-16080	80	38	19	40	17	65	17	M16	0.32
CP06-16100	100		25	55	30	85			0.53
CP06-16125	125		25	70	45	110			0.65
CP06-20150	150	50	25	82	50	134	21	M20	1.10
CP06-20200	200		32	112	80	184			1.90