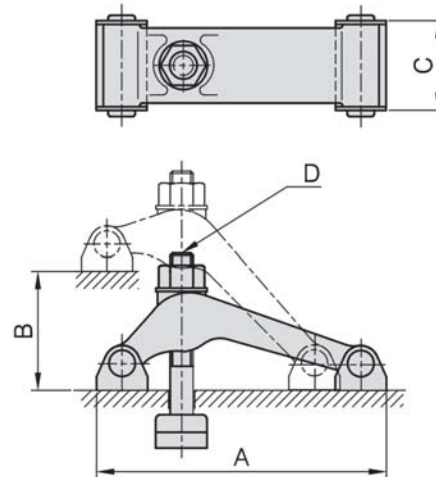


CP19

FORGED SWIVEL CLAMP



- Material : S45C(JIS), Steel forging.
- Heat treated : HRC 32~38°.
- Surface finish : Black Oxide.



MODEL NO.	A	B	C	D	kg
CP19-12125	131	75	46.5	M12-125	1.50
CP19-16150	156	85	55.0	M16-150	2.64
CP19-20194	201	105	62.0	M20-175	4.80

BP

BPA

BC

CP

SU

PT