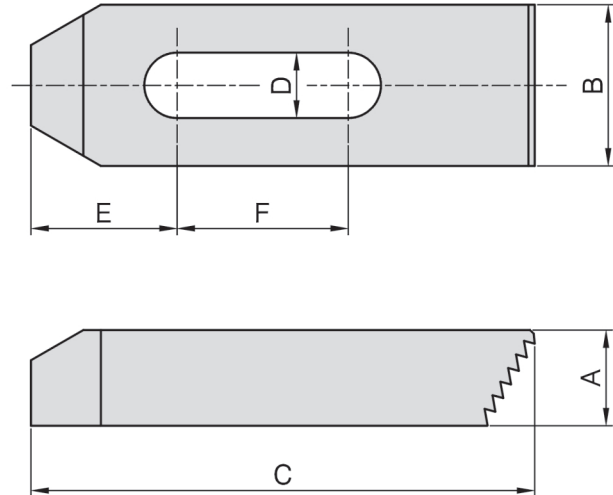


CP25

壓板 STEP CLAMP



- 材質：S45C
- 表面：染黑處理
- 熱處理：HRC 32°~38°
- 用途：與 SU25 配合使用



| MODEL NO. | A | B | C | D | E | F | kg |
|------------|----|----|-----|----|----|----|-------|
| CP25-10063 | 13 | 25 | 63 | 11 | 18 | 19 | 0.100 |
| CP25-10100 | 16 | 25 | 100 | | 27 | 37 | 0.215 |
| CP25-10150 | 19 | 32 | 150 | | 30 | 50 | 0.570 |
| CP25-12063 | 13 | 25 | 63 | 13 | 20 | 14 | 0.100 |
| CP25-12100 | 19 | 32 | 100 | | 29 | 34 | 0.320 |
| CP25-12150 | 22 | 32 | 150 | | 32 | 50 | 0.650 |
| CP25-14063 | 13 | 25 | 63 | 15 | 20 | 14 | 0.100 |
| CP25-14100 | 19 | 32 | 100 | | 29 | 34 | 0.315 |
| CP25-14150 | 22 | 32 | 150 | | 32 | 50 | 0.600 |
| CP25-16063 | 16 | 32 | 63 | 17 | 22 | 12 | 0.160 |
| CP25-16100 | 19 | 38 | 100 | | 31 | 26 | 0.400 |
| CP25-16150 | 22 | 38 | 150 | | 40 | 47 | 0.710 |
| CP25-18063 | 16 | 32 | 63 | 20 | 22 | 12 | 0.140 |
| CP25-18100 | 19 | 38 | 100 | | 31 | 26 | 0.380 |
| CP25-18150 | 22 | 38 | 150 | | 40 | 47 | 0.750 |
| CP25-20100 | 19 | 38 | 100 | 21 | 31 | 26 | 0.360 |
| CP25-20150 | 25 | 38 | 150 | | 43 | 44 | 0.750 |
| CP25-20200 | 25 | 50 | 200 | | 55 | 65 | 1.500 |
| CP25-24150 | 32 | 50 | 150 | 26 | 43 | 38 | 1.290 |
| CP25-24200 | 32 | 50 | 200 | | 53 | 57 | 2.000 |
| CP25-24250 | 38 | 50 | 250 | | 60 | 64 | 2.950 |