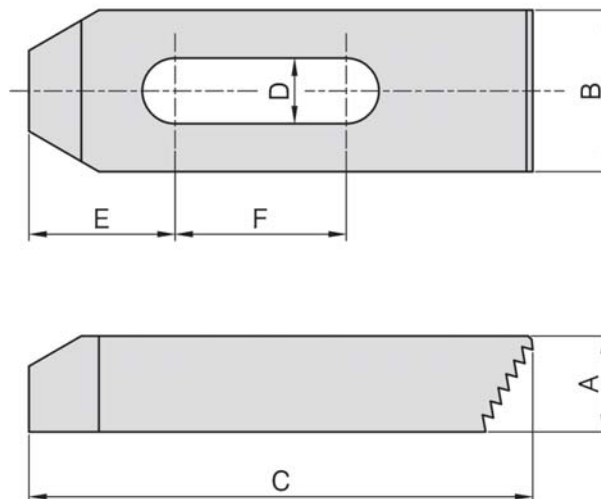


CP25

STEP CLAMP



- Material : S45C
- Heat treated : HRC 32°~38°.
- Surface finish : Black Oxide.
- Application : Used with SU25.

MODEL NO.	A	B	C	D	E	F	kg
CP25-10063	13	25	63	11	18	19	0.100
CP25-10100	16	25	100		27	37	0.215
CP25-10150	19	32	150		30	50	0.570
CP25-12063	13	25	63	13	20	14	0.100
CP25-12100	19	32	100		29	34	0.320
CP25-12150	22	32	150		32	50	0.650
CP25-14063	13	25	63	15	20	14	0.100
CP25-14100	19	32	100		29	34	0.315
CP25-14150	22	32	150		32	50	0.600
CP25-16063	16	32	63	17	22	12	0.160
CP25-16100	19	38	100		31	26	0.400
CP25-16150	22	38	150		40	47	0.710
CP25-18063	16	32	63	20	22	12	0.140
CP25-18100	19	38	100		31	26	0.380
CP25-18150	22	38	150		40	47	0.750
CP25-20100	19	38	100	21	31	26	0.360
CP25-20150	25	38	150		43	44	0.750
CP25-20200	25	50	200		55	65	1.500
CP25-24150	32	50	150	26	43	38	1.290
CP25-24200	32	50	200		53	57	2.000
CP25-24250	38	50	250		60	64	2.950