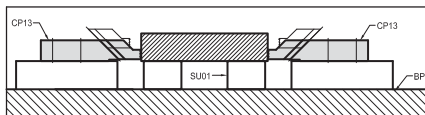
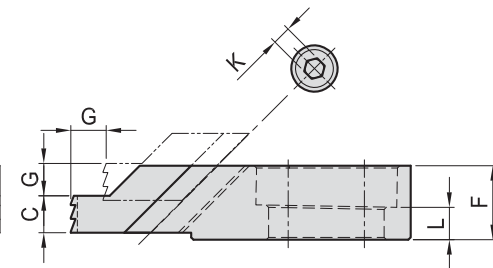
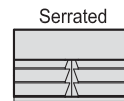
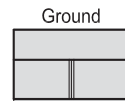
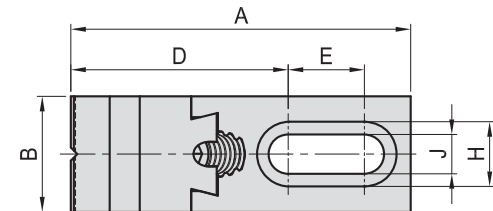


CP13

ADJUSTABLE EDGE CLAMP



- Material : S45C(JIS) / CK45(DIN)
- Heat treated : HRC 38°, Jaw Surface treated with high frequency quenching.
- Surface finish : Black Oxide.
- Application : Low profile side clamp is ideal for holding thin parts and keeps top surfaces clear for machining.



MODEL NO.	A	B	C	D	E	F	G	H	J	K	L	Type	kg
CP13-0825-G	72.0	25	8.5	45.5	16.5	16	7	14	8.5	5	7	Ground	0.15
CP13-1235-G	105.0	35	10.5	62.5	30.0	22	12	20	13.5	6	9		0.45
CP13-1640-G	133.0	40	14.0	80.5	35.0	30	14	26	17.0	8	13		0.88
CP13-0825-S	73.5	25	8.5	47.0	16.5	16	7	14	8.5	5	7	Serrated	0.15
CP13-1235-S	106.5	35	10.5	64.0	30.0	22	12	20	13.5	6	9		0.45
CP13-1640-S	134.5	40	14.0	82.0	35.0	30	14	26	17.0	8	13		0.88