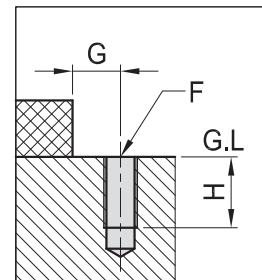
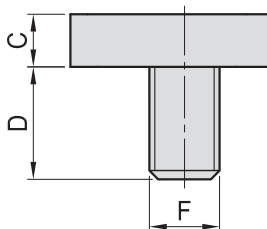
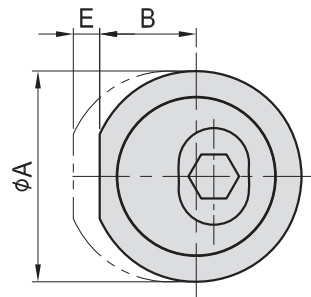


CP24

ECCENTRIC CAM LOCK



- Material : S45C (JIS)
- Heat treated : HRC 35° (ECCENTRIC CAM)



MODEL NO.	A	B	C	D	E	F	G	H	kg
CP24-0824	24	11.0	6	12.8	3	M 8	11.5	17	0.020
CP24-1026	26	11.8	8	14.3	4	M10	12.5	22	0.030
CP24-1230	30	13.5	9	17.8	5	M12	14.5	22	0.050
CP24-1638	38	16.0	12	20.8	6	M16	17.5	26	0.115

SVF

ALV

OK-
VISE

OTHER

Column
for
Technical
Data