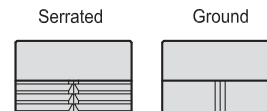
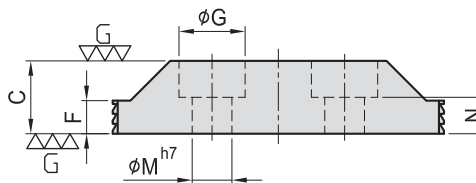
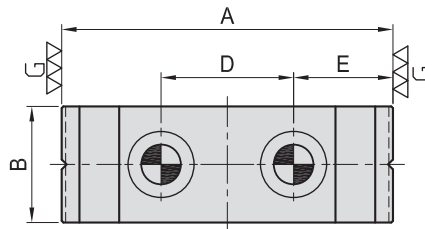


# CP30

## THIN BLOCK STOP



- Material : S45C
- Heat treated : HRC 32°~38°.
- Surface finish : Black Oxide.
- Application : used with CP13.

MODEL NO.	A	B	C	D	E	F	G	M	N	kg	TYPE
CP30-12100-S	100	35	22	40	30	10	20	12	11	0.46	Serrated
CP30-16130-S	130	40	30	50	40	14	26	16	14	0.88	
CP30-12100-G	100	35	22	40	30	10	20	12	11	0.46	Ground
CP30-16130-G	130	40	30	50	40	14	26	16	14	0.88	