

CP40

MACHINABLE IRREGULAR CLAMPS



- Material : Soft Jaw : A6061, Base : S45C(JIS)
- Surface finish : Soft Jaws : Anodic Treatment
- Heat treated : Base : HRC 25°~ 30°
- Application : Vertical Machining Center
- Features : Hold the irregular clamps of aluminum and copper.

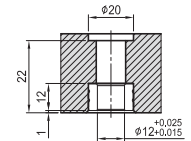
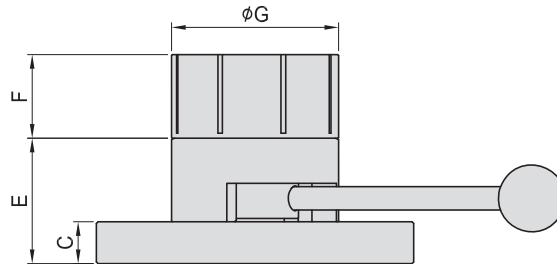
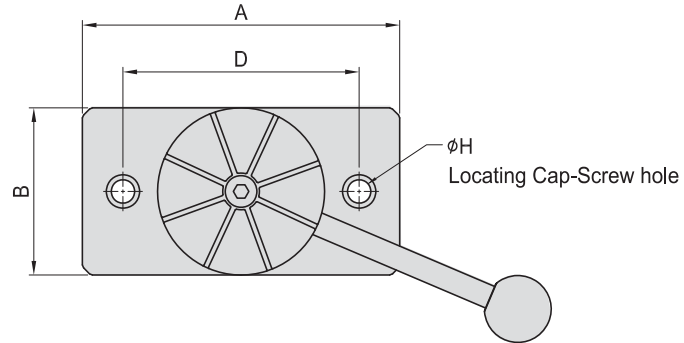


Figure H

MODEL NO.	A	B	C	D	E	F	G	H	kg
CP40-A100	190	100	25	141.42	75	50	100	12	7.5