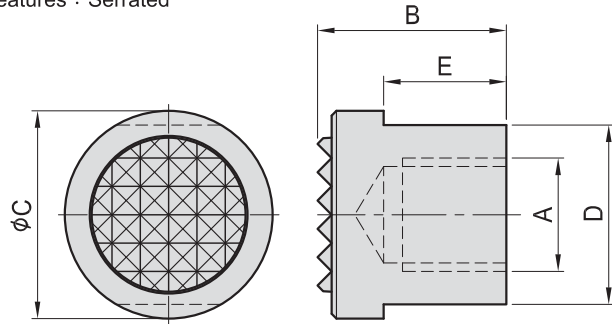


# PT13-15

## GRIPPER NUT

- Material : S45C(JIS)
- Surface finish : Black Oxide.
- Application : Use for supporting workpiece.
- Features : Serrated

### PT13 SERRATED END



**Tooth plate**

- Material : SKH9(JIS)S18-1-2-5(DIN)
- Heat treated : HRC 60°
- Surface finish : Black Oxide.

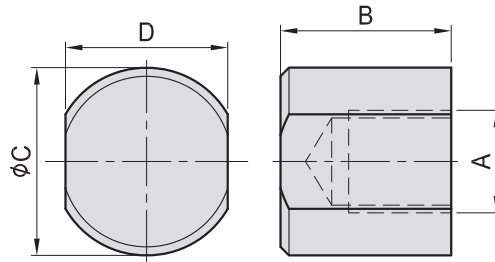
MODEL NO.	A	B	C	D	E	kg
PT13-1220	M12	20	22	19	13	0.043
PT13-1625	M16	25	28	24	16	0.080

**Tooth plate**

- Material : Extremely hard.
- Surface finish : Black Oxide.

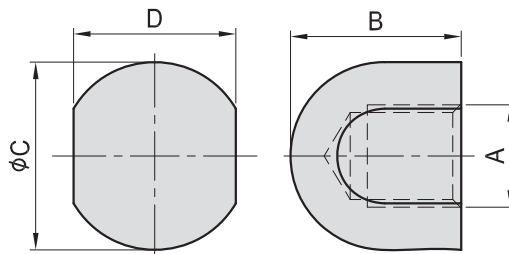
MODEL NO.	A	B	C	D	E	kg
PT13-1220-K	M12	20	22	19	13	0.043
PT13-1625-K	M16	25	28	24	16	0.080

### PT14 FLAT END



MODEL NO.	A	B	C	D	kg
PT14-1220	M12	20	22	19	0.043
PT14-1625	M16	25	28	24	0.076

### PT15 ROUND END



MODEL NO.	A	B	C	D	kg
PT15-1220	M12	20	22	19	0.042
PT15-1625	M16	25	28	24	0.063

BP

BPA

BC

CP

SU

PT

SVF

ALV

OK-  
VISE

OTHER

Column  
for  
Technical  
Data