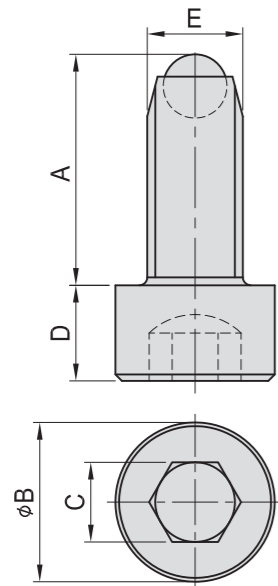


PT17

SWIVEL SHOULDER CLAMPING SCREW

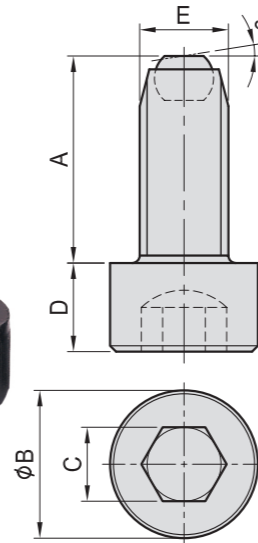
PT17A ROUND END



MODEL NO.	A	B	C	D	E	max (KN)	g
PT17A-0615	14.5						5.3
PT17A-0625	23.5	10	5	6	M 6	9	7.4
PT17A-0635	33.5						9.5
PT17A-0820	18.7						13.5
PT17A-0830	28.7	13	6	8	M 8	15	20.0
PT17A-0840	38.7						24.0
PT17A-0850	50.7						30.0
PT17A-1025	25.0						26.0
PT17A-1040	40.0	16	8	10	M10	20	34.0
PT17A-1060	60.0						46.0
PT17A-1230	31.2						40.0
PT17A-1245	46.2	18	10	12	M12	30	50.0
PT17A-1265	66.2						70.0
PT17A-1280	81.2						83.0
PT17A-1640	40.6						90.0
PT17A-1650	50.6	24	14	16	M16	60	110.0
PT17A-1665	65.6						130.0
PT17A-1690	90.6						170.0
PT17A-20050	52.0						185.1
PT17A-20080	82.0	30	17	20	M20	90	256.4
PT17A-20100	102.0						301.2
PT17A-24060	62.0						324.8
PT17A-24090	92.0	36	19	24	M24	120	283.5
PT17A-24120	122.0						351.0

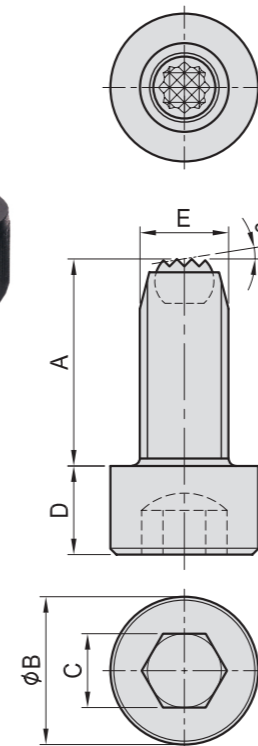
- Material :
Bolt : SCM435(JIS) / 34CrMo4(DIN)
Ball : SUJ2(JIS) / 100Cr6(DIN)
- Heat treated :
Bolt : HRC 28°~32°
Ball : HRC 62°
- Surface finish : Black Oxide.
- Application : Support or clamp the work piece.
- Features : Available with : Flat end, round end, serrated end, less chance of deforming the work piece due the rounded tip.

PT17B FLAT END



MODEL NO.	A	B	C	D	E	max (KN)	g
PT17B-0615	14						5.3
PT17B-0625	23	10	5	6	M 6	9	7.4
PT17B-0635	33						9.5
PT17B-0820	18						13.5
PT17B-0830	28	13	6	8	M 8	15	20.0
PT17B-0840	38						24.0
PT17B-0850	50						30.0
PT17B-1025	24						26.0
PT17B-1040	39	16	8	10	M10	20	34.0
PT17B-1060	59						46.0
PT17B-1230	30						40.0
PT17B-1245	45	18	10	12	M12	30	50.0
PT17B-1265	65						70.0
PT17B-1280	80						83.0
PT17B-1640	39						90.0
PT17B-1650	49	24	14	16	M16	60	110.0
PT17B-1665	64						130.0
PT17B-1690	89						170.0
PT17B-20050	50						185.1
PT17B-20080	80	30	17	20	M20	90	256.4
PT17B-20100	100						301.2
PT17B-24060	60						324.8
PT17B-24090	90	36	19	24	M24	120	283.5
PT17B-24120	120						351.0

PT17C SERRATED END



MODEL NO.	A	B	C	D	E	max (KN)	g
PT17C-0615	14						5.3
PT17C-0625	23	10	5	6	M 6	9	7.4
PT17C-0635	33						9.5
PT17C-0820	18						13.5
PT17C-0830	28	13	6	8	M 8	15	20.0
PT17C-0840	38						24.0
PT17C-0850	50						30.0
PT17C-1025	24						26.0
PT17C-1040	39	16	8	10	M10	20	34.0
PT17C-1060	59						46.0
PT17C-1230	30						40.0
PT17C-1245	45	18	10	12	M12	30	50.0
PT17C-1265	65						70.0
PT17C-1280	80						83.0
PT17C-1640	39						90.0
PT17C-1650	49	24	14	16	M16	60	110.0
PT17C-1665	64						130.0
PT17C-1690	89						170.0
PT17C-20050	50						185.1
PT17C-20080	80	30	17	20	M20	90	256.4
PT17C-20100	100						301.2
PT17C-24060	60						324.8
PT17C-24090	90	36	19	24	M24	120	283.5
PT17C-24120	120						351.0

BP

BPA

BC

CP

SU

PT

SVF

ALV

OK-
VISE

OTHER

Column
for
Technical
Data