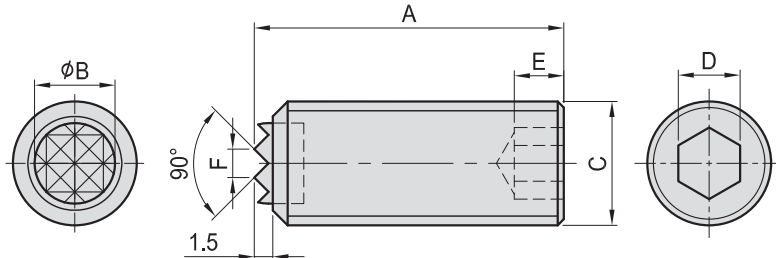
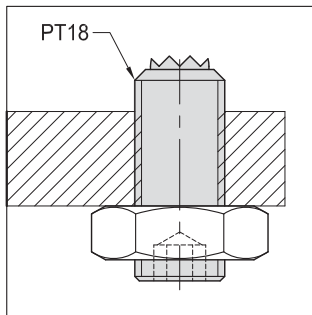


# PT18

## GRIPPER SCREW



- Material : SCM435(JIS) / 34CrMo4(DIN)
- Heat treated : HRC 32°~38°
- Serrated surface to be heat treated with high frequency quenching.
- Surface finish : Black Oxide.
- Application : Multipurpose work support and clamping unit, ideal for rough parts.
- Features : Excellent holding power from the serrated face.



MODEL NO.	A	B	C	D	E	F	kg
PT18-1025	25	6.5	M10	5	4	2.3	0.015
PT18-1050	50						0.030
PT18-1225	25	8.0	M12	6	5	2.3	0.022
PT18-1250	50						0.045
PT18-1625	25	11.5	M16	8	6	3.0	0.038
PT18-1650	50						0.078
PT18-2025	25	13.0	M20	10	8	3.0	0.058
PT18-2050	50						0.120

MODEL NO.	A	B	C	D	E	F	kg
PT18-1025-K	25	6.5	M10	5	4	2.3	0.015
PT18-1050-K	50						0.030
PT18-1225-K	25	8.0	M12	6	5	2.3	0.022
PT18-1250-K	50						0.045
PT18-1625-K	25	11.5	M16	8	6	3.0	0.038
PT18-1650-K	50						0.078
PT18-2025-K	25	13.0	M20	10	8	3.0	0.058
PT18-2050-K	50						0.120

### Tooth plate

- Material : SKH9(JIS)  
S18-1-2-5(DIN)
- Heat treated : HRC 60°

### Tooth plate

- Material : extremely hard