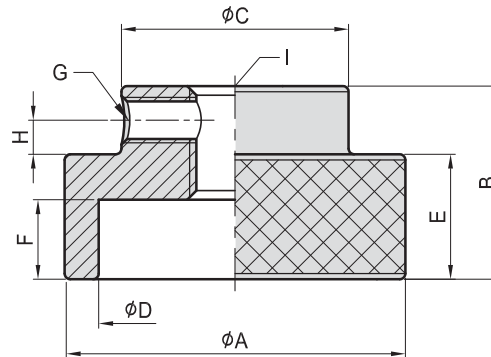


PT33

KNURLED NUT



- Material : S45C(JIS)/CK45(DIN)
- Heat treated : HRC 32°~38°
- Surface finish : Black Oxide.
- Application : Used where quick hand assembly is needed.

MODEL NO.	A	B	C	D	E	F	G	H	I	kg
PT33-0830	30	17	20	24	11	7	M4	3	M8	0.05
PT33-1035	35	20	28	30	13	8	M4	4	M10	0.09
PT33-1240	40	24	32	34	15	10	M5	4	M12	0.12
PT33-1645	45	30	35	38	18	12	M6	5	M16	0.18

SVF

ALV

OK-
VISE

OTHER

Column
for
Technical
Data