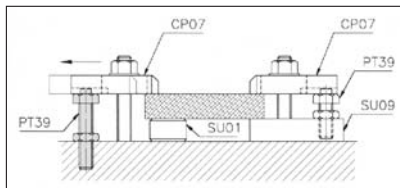
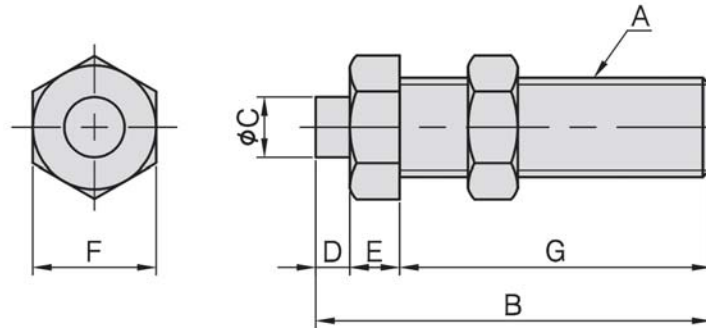


# PT39

## CLAMP REST



- Material : S45C(JIS)
- Heat treated : HRC 35°
- Surface Finish : Black Oxide.



MODEL NO.	A	B	C	D	E	F	G	kg
PT39-1219	M12	75	9.5	6	9	19	60	0.09
PT39-1624	M16	80	11.0	7	10	24	63	0.17
PT39-2030	M20	100	12.0	8	12	30	80	0.35

BP

BPA

BC

CP

SU

PT