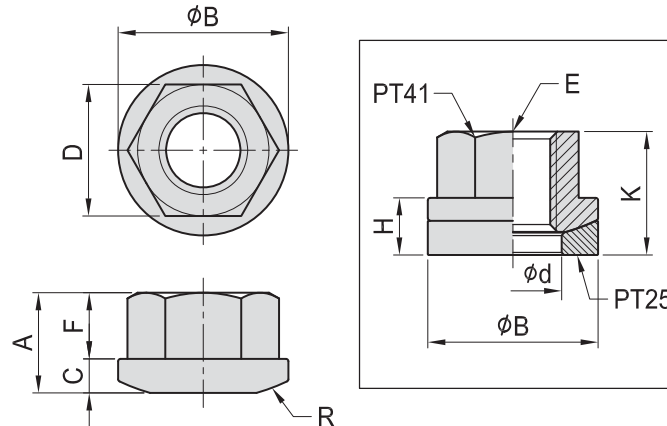


PT41

SWIVEL FLANGE NUTS



- Material : S45C(JIS)
- Heat treated : HRC 32°~35°
- Surface finish : Black Oxide.

MODEL NO.	A	B	C	D	d	E	F	H	K	R	kg	
PT41-0813	12.0	19	3.0	13	10	M8	7.8	7	15.0	30	0.021	
PT41-1017	13.0	22		17	12	M10	8.4	8	16.5		0.032	
PT41-1219	14.3	26	4.0	19	15	M12	9.0	10	19.0	32	0.046	
PT41-1422	17.5	28		22	16	M14	11.4	11	22.0		0.066	
PT41-1624	20.0	32	4.5	24	19	M16	12.8		12	23.8	40	0.103
PT41-1827	20.6	35		27	20	M18	13.6	25.5		0.106		
PT41-2030	25.0	40	6.0	30	23	M20	16.6	14	31.0	48	0.183	
PT41-2232	25.4	45		32	26	M22	16.9	15	31.5		70	0.210
PT41-2436	28.0	50		36	28	M24	18.7		33.5			0.270

BP

BPA

BC

CP

SU

PT