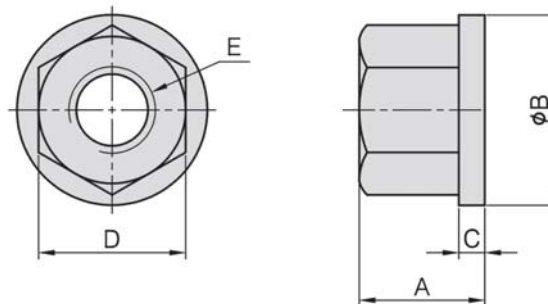


# PT04

## FLANGE NUT



- Material : S45C(JIS) / CK45(DIN)
- Heat treated : HRC 30°~35°
- Surface finish : Black Oxide.



MODEL NO.	A	B	C	D	E	kg
PT04-0812	9	17	3	12	M 8	0.010
PT04-1017	13	22	3	17	M10	0.020
PT04-1219	17	28	4	19	M12	0.040
PT04-1422	17	28	4	22	M14	0.040
PT04-1624	20	32	5	24	M16	0.060
PT04-1827	20	35	5	27	M18	0.070
PT04-2030	25	40	6	30	M20	0.110
PT04-2232	28	45	6	32	M22	0.150
PT04-2436	28	47	6	36	M24	0.185

SVF

ALV

OK-  
VISE

OTHER

Column  
for  
Technical  
Data