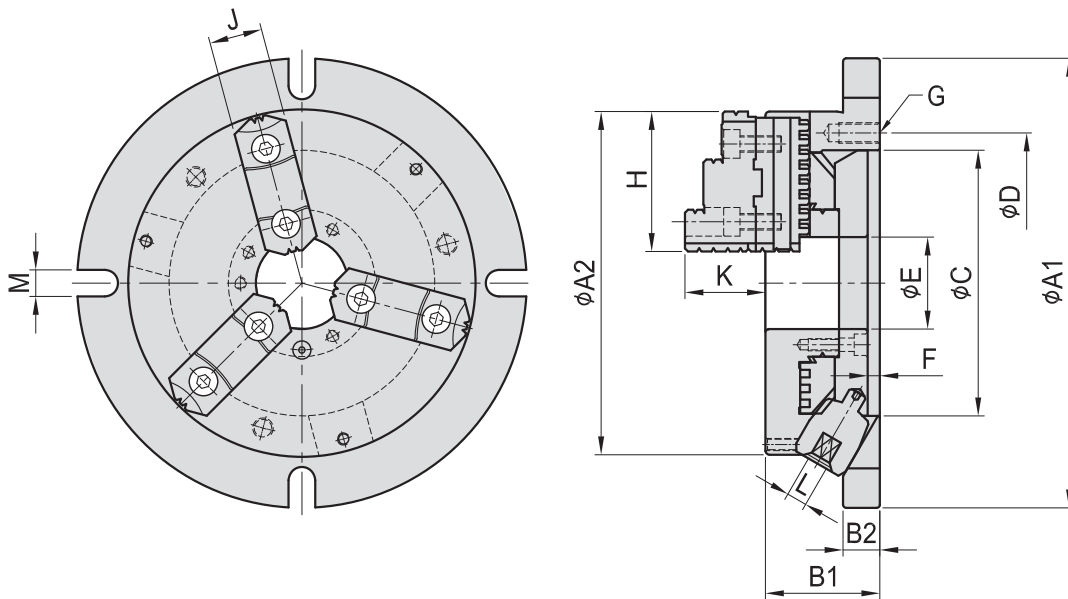


ROUND SUPER THIN CHUCK

- The handle with an angle of 30 degrees is much convenient for operations.
- The "super thin thickness" design of chucks increase the "allowable distance" of machining operations.
- Chuck flange makes loading and unloading operations simpler and more convenient.
- Hard jaws and Soft jaws can be used alternatively.



SPEC./MODEL	A1	A2	B1	B2	C	D	E	F	G	H	J	K	L	M	Max. Dia Gripped by		Kg
															external	internal	
NBK-06	220	170	58	18	130	147	45	6	3-M10	68	26	40	10	13	phi 8-phi 160	phi 48-phi 150	10.6
NBK-08	270	210	65	20	155	172	60	6	3-M10	82	28	43	11	13	phi 11-phi 200	phi 62-phi 190	18.1
NBK-10	315	255	73	20	190	210	80	6	3-M12	93	32	52	12	16	phi 12-phi 250	phi 72-phi 240	27.9
NBK-12	370	305	80	22	250	285	105	5	3-M12	118	40	59	14	18	phi 15-phi 300	phi 86-phi 290	42.9

- BP
- BPA
- BC
- CP
- SU
- PT
- SVF
- ALV
- OK-VISE
- OTHER

Column for Technical Data