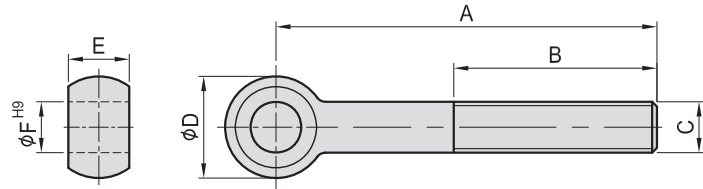
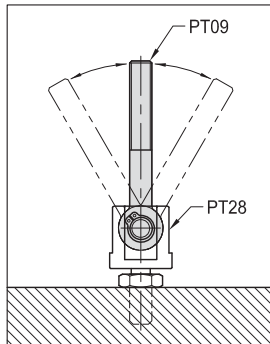


# PT09

## EYEBOLT



- Material : SCM220(JIS)
- Heat treated : HRC 30°~35°
- Surface finish : Black Oxide.
- Application : use with PT28 to build custom clamping components.
- Features : Reamed hole for smooth swiveling.



MODEL NO.	A	B	C	D	E	F	kg
PT09-10075	75	40	M10	20	12	10	0.060
PT09-10100	100						0.080
PT09-12075	75	50	M12	25	14	12	0.095
PT09-12100	100	60					0.120
PT09-16125	125	60	M16	32	17	16	0.250
PT09-16150	150	75					0.300
PT09-20125	125	60	M20	40	22	20	0.400
PT09-20150	150	75					0.485