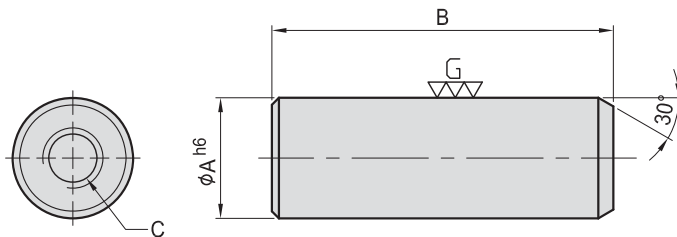


PT11

THREADED DOWEL PINS



- Material : SCM440(JIS) / 34CrMo4(DIN)
- Heat treated : HRC 45°
- Application : Threaded end makes removal easy.



MODEL NO.	A	B	C	kg
PT11-0825	8	25	M4	0.010
PT11-1030	10	30	M5	0.015
PT11-1234	12	34	M6	0.030
PT11-1642	16	42		0.060
PT11-2047	20	47	M8	0.100
PT11-2549	25	49		0.160

SVF

ALV

OK-
VISE

OTHER

Column
for
Technical
Data