

# PT12

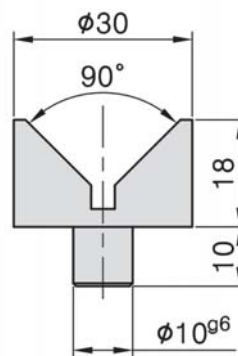
## JACK SCREW TIP

- Material : SCM440(JIS) / 42CrMo4(DIN)
- Heat treated : HRC 60°
- Surface finish : Black Oxide.
- Application : Multipurpose support tip, use with SU11.

### PT12A-3028



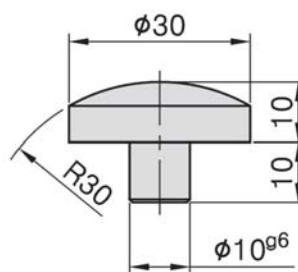
NW : 70g



### PT12B-3020



NW : 50g



### PT12C-3028



NW : 60g

